

Lot 22 Stone Brook

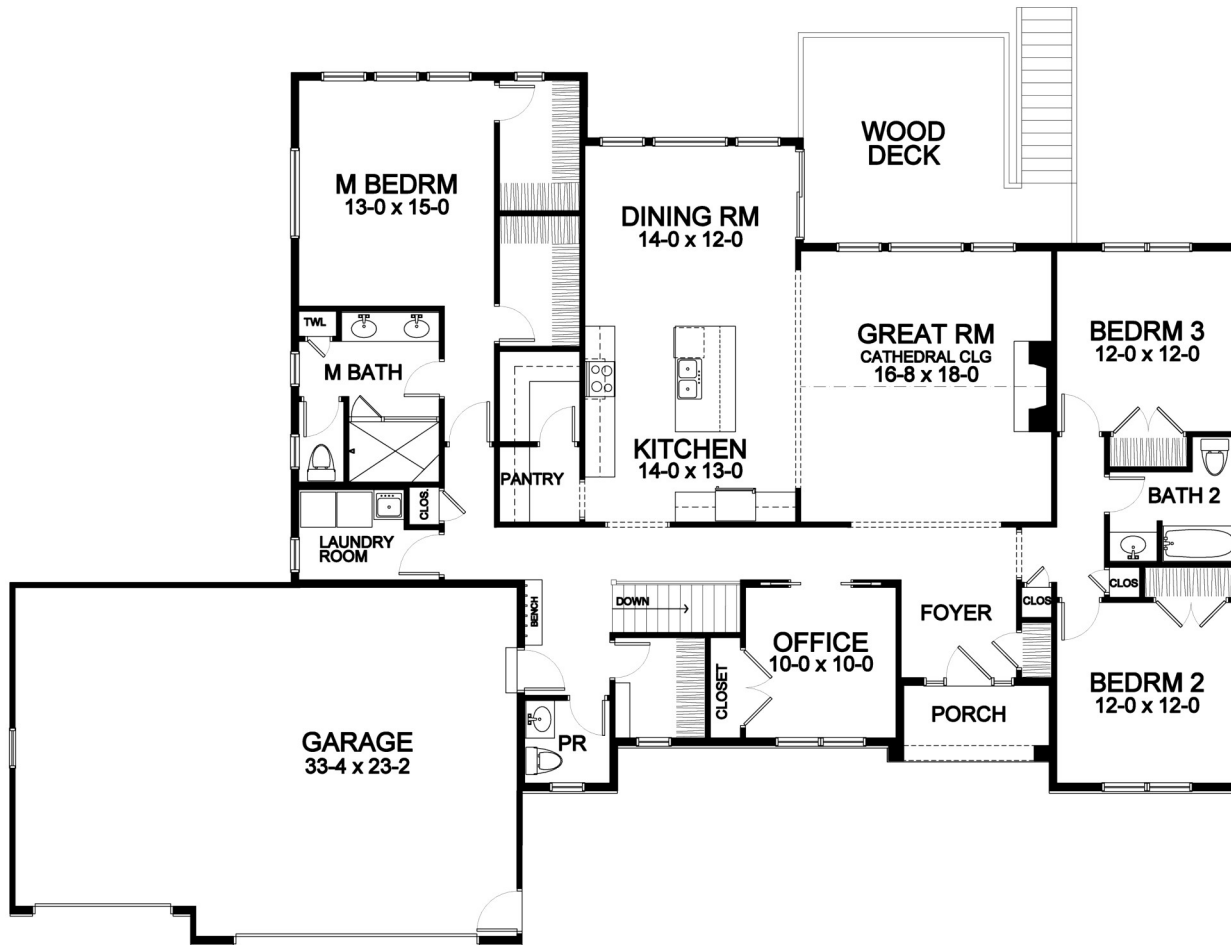


2,297 Square Foot Ranch

Stone Brook

2,297 SF Ranch Portfolio Plan Plan Details

- Square Footage:
First Floor 2,297
Total 2,297
- Three Car Front-Load Garage with Carriage Style Overhead Doors
- Stone and Shake Siding Front Accents
- Three Bedrooms; 2-1/2 Baths
- Private Office
- Great Room with Gas Fireplace and High Cathedral Ceiling
- Dining Room Open to Kitchen and GR
- Butler's Pantry and Walk-In Pantry
- Walk-Out Lower Level with Sliding Door and Six Pella Windows
- Hardwood Floors in Foyer, Hall, Kitchen, Dining Room, Great Room and Pantries
- Master Suite with Tow Large Walk-in Closets and Double Vanity
- Bench Seat in Garage Entry
- Ceramic Tile Floors in Baths and Laundry
- Open Central Staircase to Lower Level
- Low Maintenance Deck with Stairs to Lawn
- Professional Landscaping
- 97%+ Efficient Gas Heating/Cooling System for Superior Comfort and Efficiency



First Floor

Front elevation rendering is an approximation of final exterior details. Dimensions shown are approximate and not final. All dimensions are subject to change prior to or during construction © Copyright Patrick J. Morabito, AIA Architect. These drawings may not be reproduced in any form without written permission from Patrick J. Morabito, AIA Architect and Woodstone Custom Homes, Inc.



585-586-0953