

Woodstone Custom Homes

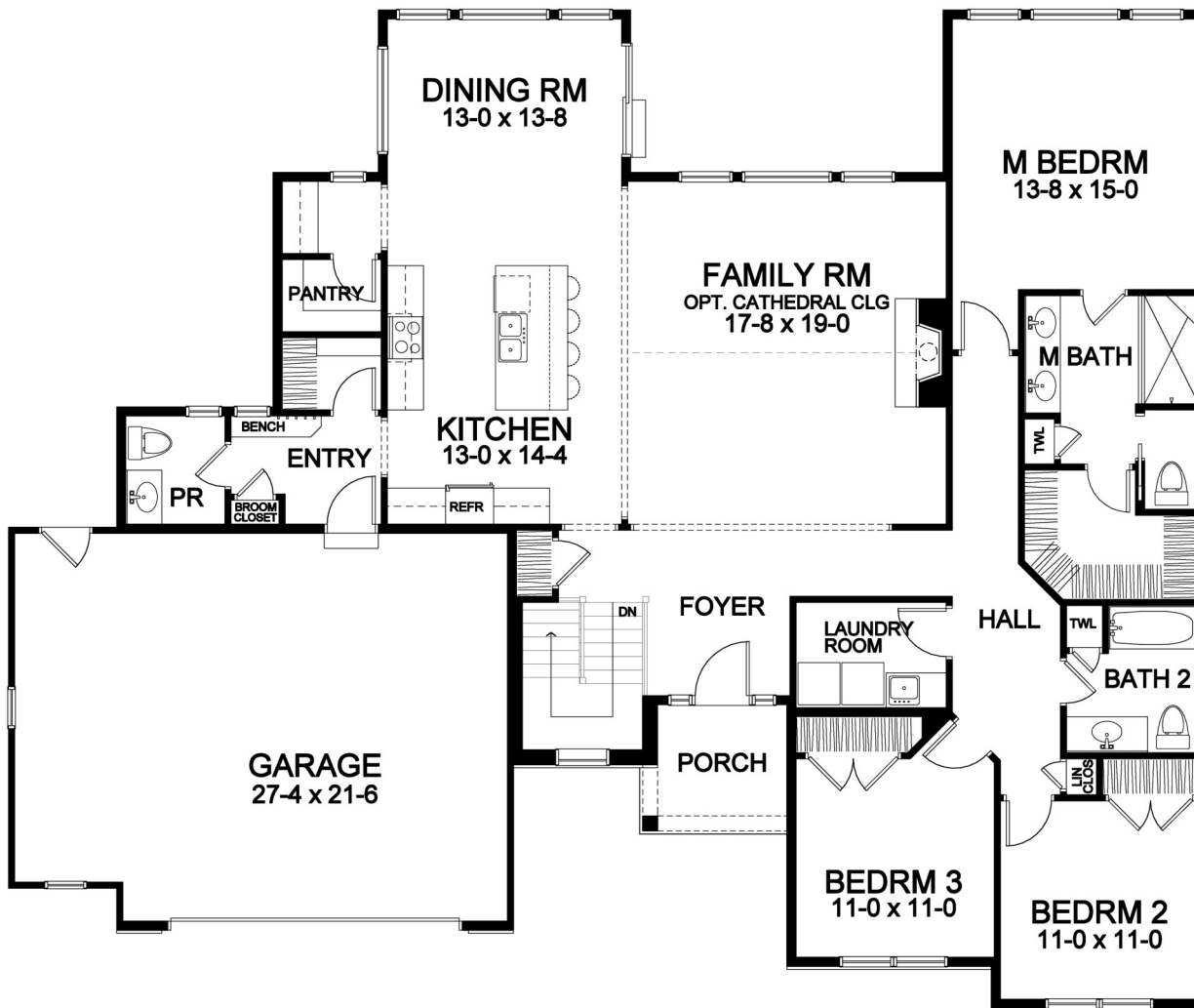


2,118 Square Foot Ranch

Stone Brook

2,118 SF Ranch Portfolio Plan Plan Details

- Square Footage:
First Floor 2,118
Total 2,118
- Two Car Front-Load Garage with Carriage Style Overhead Door and Storage Area
- Covered Front Porch
- Stone and Shake Siding Front Accents
- Three Bedrooms; 2-1/2 Baths
- Family Room with Electric Fireplace and Optional Cathedral Ceiling
- Laundry Room
- Dining Room Open to Kitchen and FR
- Butler Area/Walk-In Pantry
- Linen and Towel Closets
- Hardwood Floors in Foyer, Hall, Kitchen, Dining Room, and Family Room
- Master Suite with Large Walk-in Closet and Double Vanity
- Bench Seat in Garage Entry
- Ceramic Tile Floors in Entry, Baths and Laundry
- Central Staircase to Lower Level
- Professional Landscaping
- 96%+ Efficient Heating/Cooling System for Superior Comfort and Efficiency



First Floor

Front elevation rendering is an approximation of final exterior details. Dimensions shown are approximate and not final. All dimensions are subject to change prior to or during construction © Copyright Patrick J. Morabito, AIA Architect. These drawings may not be reproduced in any form without written permission from Patrick J. Morabito, AIA Architect and Woodstone Custom Homes, Inc.



585-586-0953