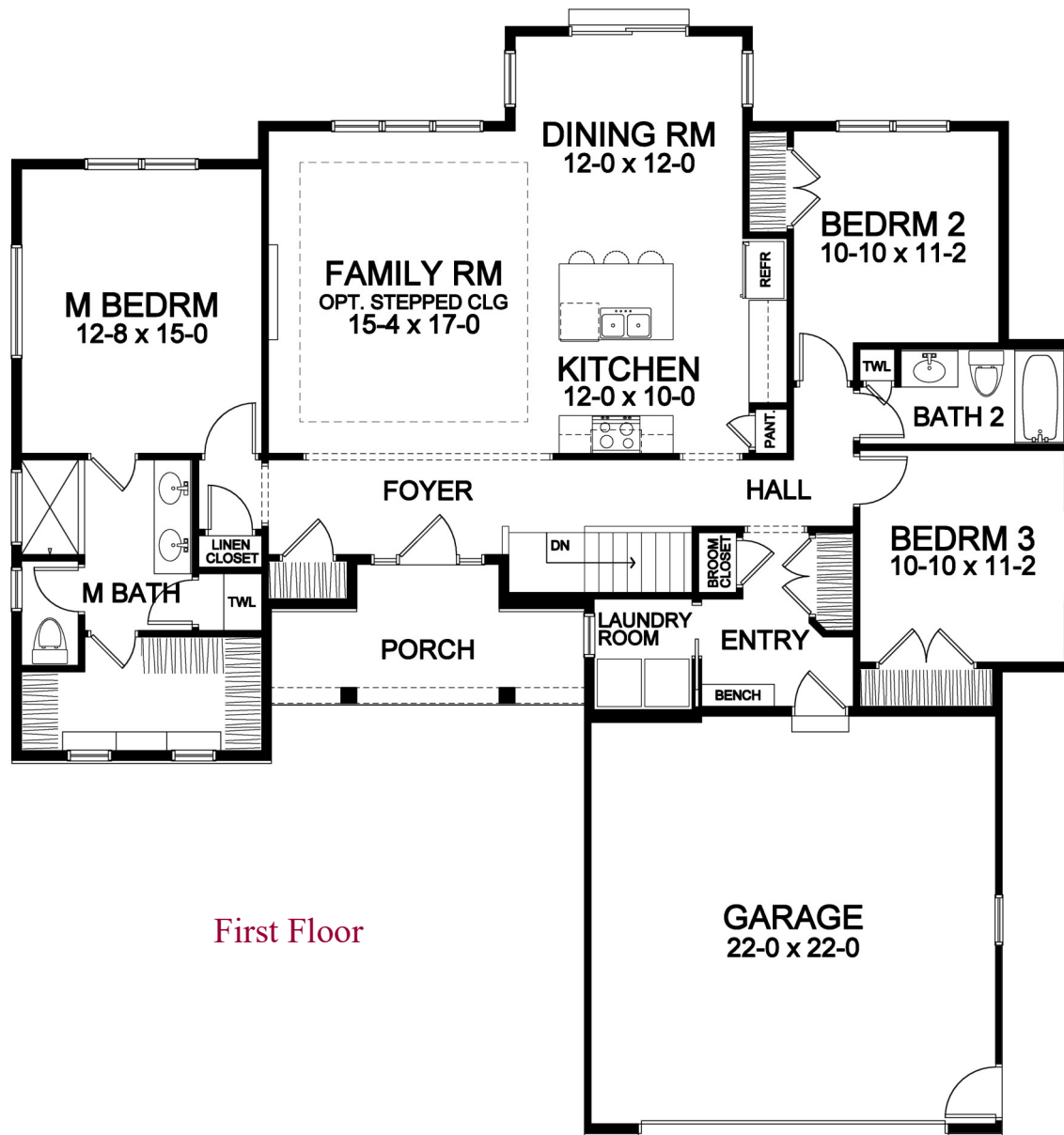


Woodstone Custom Homes



1,665 Square Foot Ranch



First Floor

Stone Brook

1,665 SF Ranch Portfolio Plan Plan Details

- Square Footage:
First Floor 1,665
Total 1,665
- Two Car Front-Load Garage with Carriage Style Overhead Door
- Large Covered Front Porch
- Stone and Shake Siding Front Accents
- Three Bedrooms; Two Baths
- Family Room with Electric Fireplace and Optional Stepped Ceiling
- Laundry Room in Service Area
- Dining Room Open to Kitchen and Family Room
- Pantry, Linen, and Towel Closets
- Hardwood Floors in Foyer, Kitchen, Dining Room, Family Room, and Hall
- Master Suite with Large Walk-in Closet, Separate Toilet Room, and Double Vanity
- Bench Seat in Garage Entry
- Ceramic Tile Floors in Entry, Baths and Laundry
- Central Staircase to Lower Level
- Professional Landscaping
- 96%+ Efficient Heating/Cooling System for Superior Comfort and Efficiency



585-586-0953

Front elevation rendering is an approximation of final exterior details. Dimensions shown are approximate and not final. All dimensions are subject to change prior to or during construction © Copyright Patrick J. Morabito, AIA Architect. These drawings may not be reproduced in any form without written permission from Patrick J. Morabito, AIA Architect and Woodstone Custom Homes, Inc.