

Woodstone Custom Homes

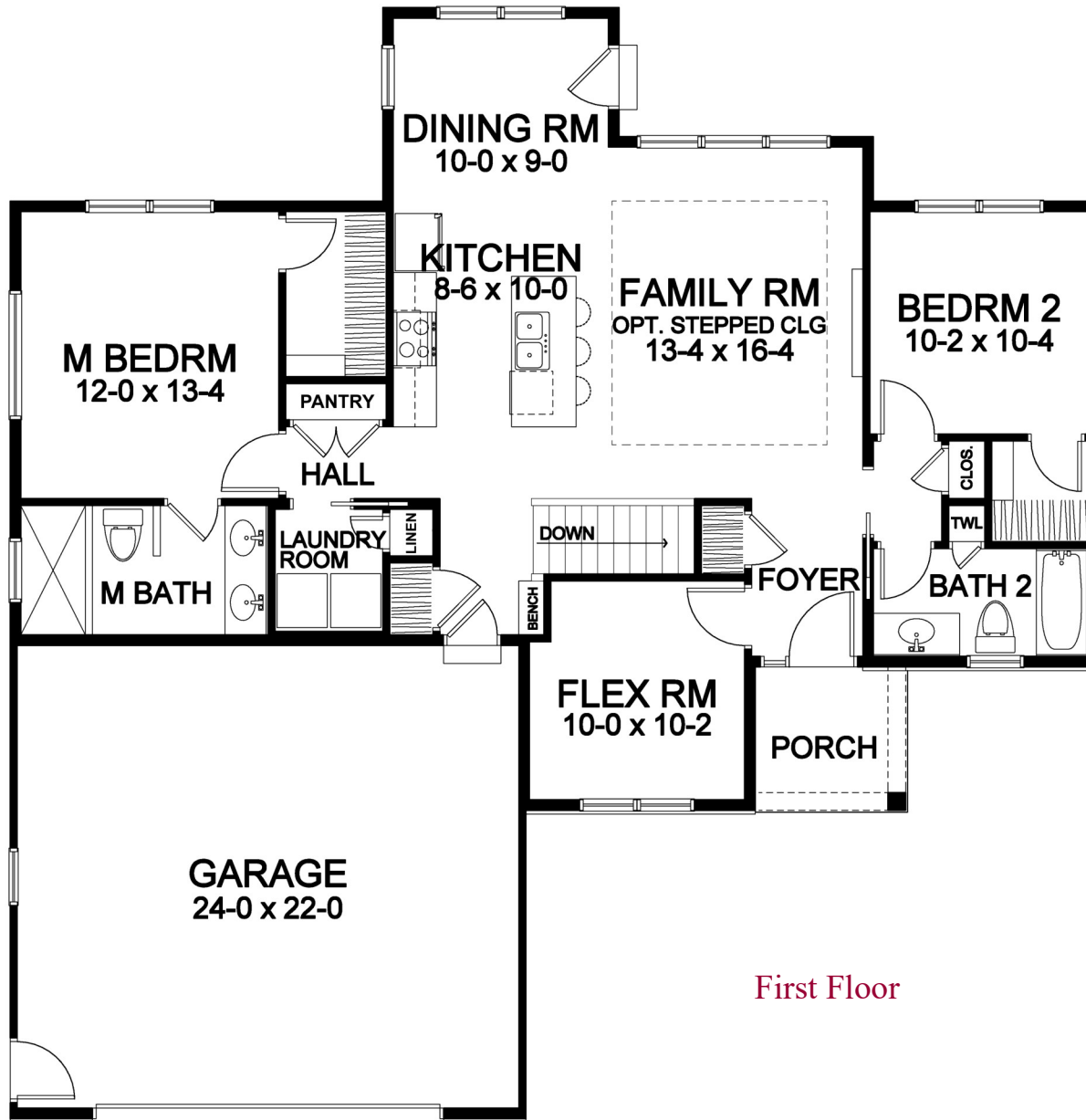


1,282 Square Foot Ranch

Stone Brook

1,282 SF Ranch Portfolio Plan Plan Details

- Square Footage:
First Floor 1,282
Total 1,282
- Two Car Front-Load Garage with Carriage Style Overhead Door
- Covered Front Porch
- Stone and Vertical Siding Front Accents
- Two Bedrooms; Two Baths
- Pocket Door to Guest Suite
- Family Room with Electric Fireplace and Optional Stepped Ceiling
- Private Flex Room
- Laundry Room in Service Area
- Dining Room Open to Kitchen and FR
- Pantry, Linen, and Towel Closets
- Hardwood Floors in Foyer, Hall, Kitchen, Dining Room, and Family Room
- Master Suite with Large Walk-in Closet and Double Vanity
- Bench Seat in Garage Entry
- Ceramic Tile Floors in Baths and Laundry
- Central Staircase to Lower Level
- Professional Landscaping
- 96%+ Efficient Heating/Cooling System for Superior Comfort and Efficiency



First Floor

Front elevation rendering is an approximation of final exterior details. Dimensions shown are approximate and not final. All dimensions are subject to change prior to or during construction © Copyright Patrick J. Morabito, AIA Architect. These drawings may not be reproduced in any form without written permission from Patrick J. Morabito, AIA Architect and Woodstone Custom Homes, Inc.



585-586-0953