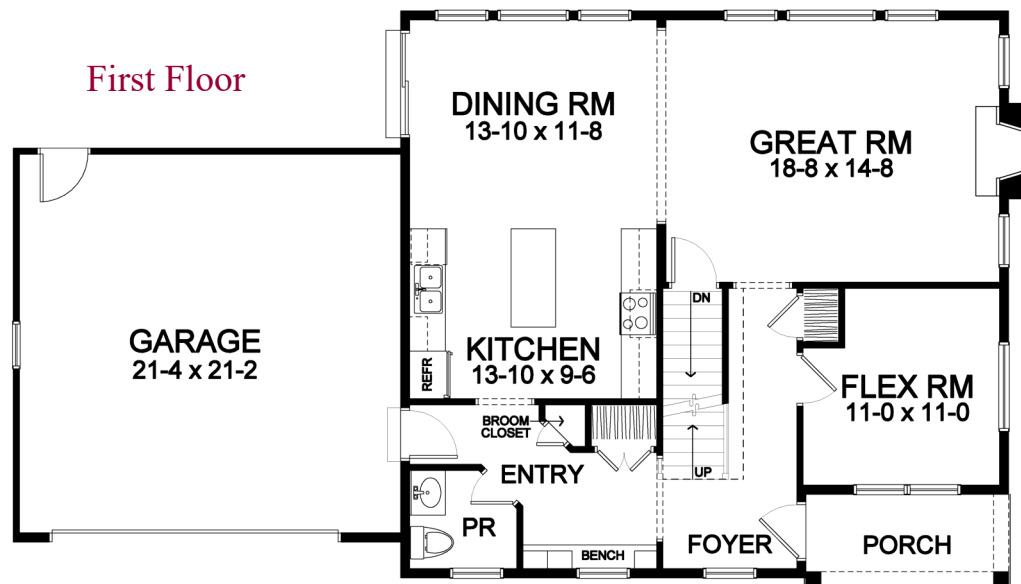
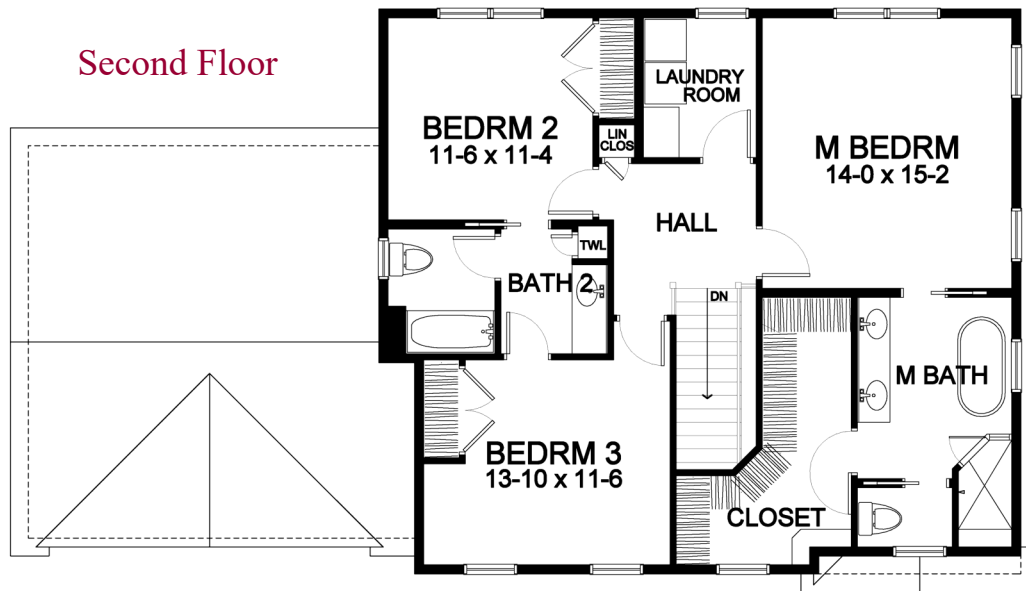


Woodstone Custom Homes



2,085 Square Foot Two-Story



Front elevation rendering is an approximation of final exterior details. Dimensions shown are approximate and not final. All dimensions are subject to change prior to or during construction © Copyright Patrick J. Morabito, AIA Architect. These drawings may not be reproduced in any form without written permission from Patrick J. Morabito, AIA Architect and Woodstone Custom Homes, Inc.

Stone Brook

2,085 SF Two-Story Portfolio Plan Plan Details

- Square Footage:
First Floor 1,024
Second Floor 1,061
Total 2,085
- Two Car Front-Load Garage with Carriage Style Overhead Door
- Covered Front Porch
- Vertical Siding Front Accents
- Three Bedrooms; 2-1/2 Baths
- Flex Room
- Great Room with Electric Fireplace
- Second Floor Laundry Room
- Dining Room Open to Kitchen and GR
- Linen, Broom, and Towel Closets
- Hardwood Floors in Foyer, Kitchen, Dining Room, and Great Room
- Master Suite with Large Walk-in Closet, Separate Toilet Room, and Double Vanity; Optional Soaking Tub
- Bench Seat in Garage Entry; Optional Cubbies
- Ceramic Tile Floors in Entry, Baths and Laundry
- Professional Landscaping
- 96%+ Efficient Heating/Cooling System for Superior Comfort and Efficiency



585-586-0953