

# *Lot 323 Willis Hill Estates*

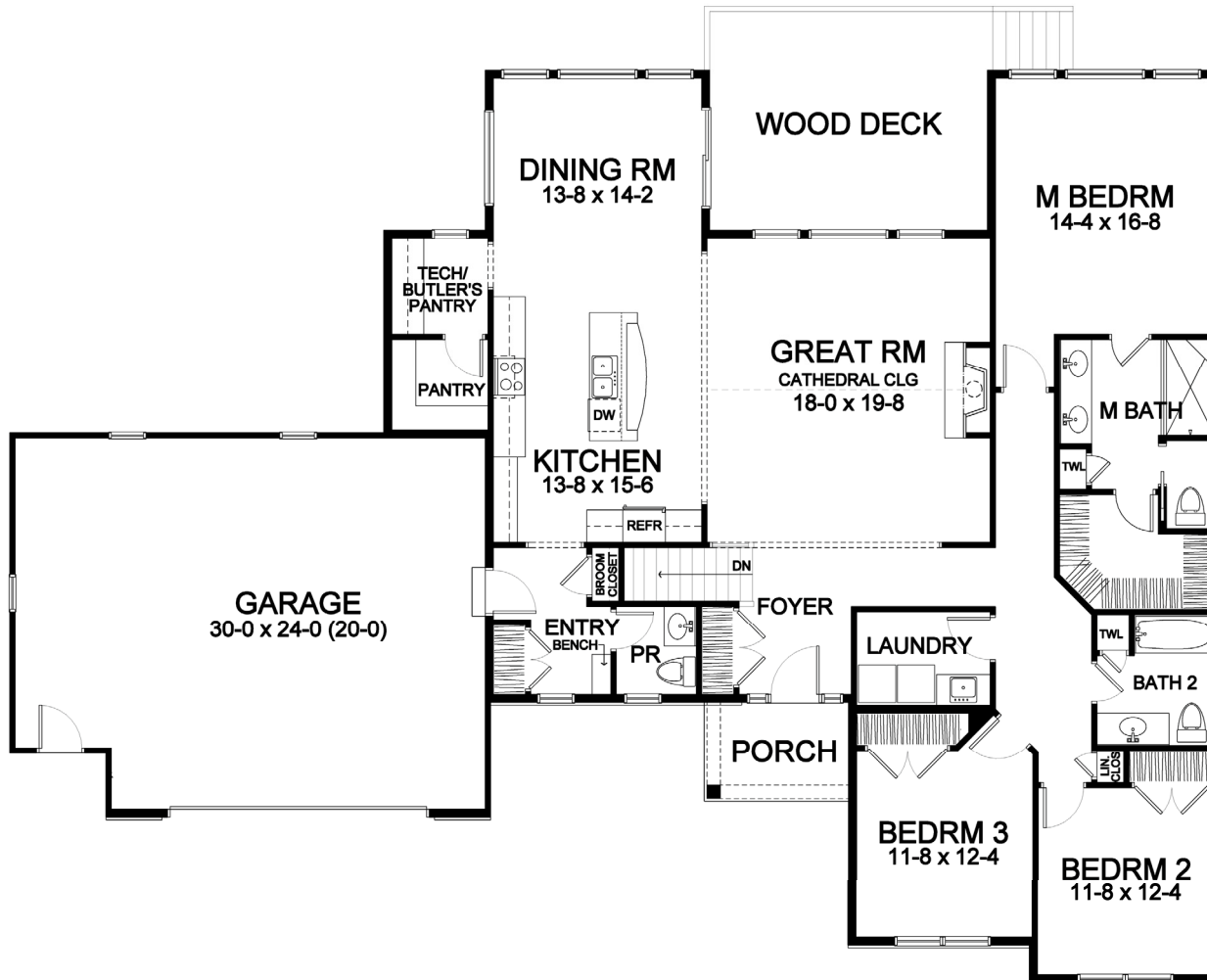


*2,105 Square Foot Ranch*



# Willis Hill Estates

**1029 Arbordale Lane (Lot 323)**  
*Plan Details*



First Floor

- Square Footage:  
 First Floor 2,105  
 Total 2,105
- Two Car Front-Load Garage with Carriage Door and Expanded Storage
- Stone and Vertical Siding Front Accents
- Three Bedrooms; 2-1/2 Baths
- Great Room with Gas Fireplace and High Cathedral Ceiling
- Office/Bedroom 3
- Laundry Room in Bedroom Wing
- Dining Room Open to Kitchen and GR
- Butler's Pantry and Walk-In Pantry
- Hardwood Floors in Foyer/Hall, Kitchen, Dining Room, Great Room, and Pantry
- Master Suite with Large Walk-in Closet, Toilet Room, and Double Vanity
- Bench Seat in Garage Entry
- Ceramic Tile Floors in Baths and Laundry
- Central Staircase to Optional Finished Walk-Out Lower Level
- Professional Landscaping and Rear Deck
- 96%+ Efficient Heating/Cooling System for Superior Comfort and Efficiency

*Front elevation rendering is an approximation of final exterior details. Dimensions shown are approximate and not final. All dimensions are subject to change prior to or during construction © Copyright Patrick J. Morabito, AIA Architect. These drawings may not be reproduced in any form without written permission from Patrick J. Morabito, AIA Architect and Woodstone Custom Homes, Inc.*



**585-586-0953**