

# *Lot 43 Stonington Ridge*



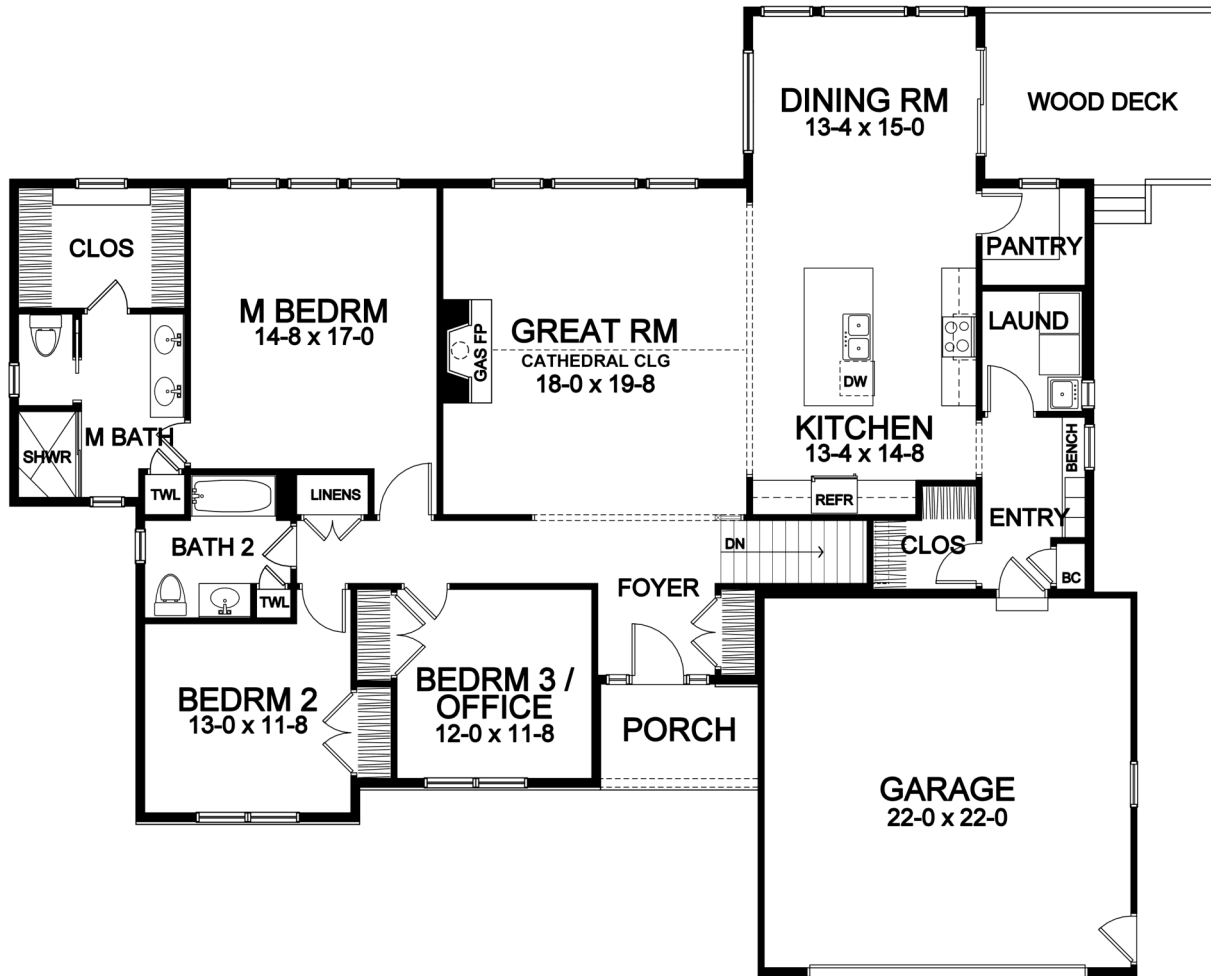
## *2,004 Square Foot Ranch Home*

Woodstone Custom Homes, Inc. • 15 Fishers Road, Suite 202 • Pittsford, New York 14534 • [homesbywoodstone.com](http://homesbywoodstone.com)

# STONINGTON RIDGE

*1070 Carrington Way (Lot 43)  
Plan Specifications*

- Square Footage:  
First Floor 2,004  
Total 2,004
- Two Car Front-Load Garage with Carriage Style Overhead Door
- Stone and Shake Siding Accent Front
- Walk-Out Lower Level with 5 Windows and Sliding Door for Future Finish
- Three Bedrooms; 2 Baths
- Large Great Room with Cathedral Ceiling and Gas Fireplace
- Dining Room Open to Kitchen
- Granite Counters in Kitchen and All Baths
- Hardwood Floors in Foyer, Kitchen, Dining Room, Great Room and Pantry
- Built-In Cubbies with Bench Seat in Garage Entry; Walk-In Pantry
- Rear Exterior Azek Deck and Low Maintenance Railing
- Ceramic Tile Floors in Entry, Baths, and Laundry Room
- Professional Landscaping
- 96%+ Efficient Heating/Cooling System for Superior Comfort and Efficiency



*Dimensions shown are approximate and not final. All dimensions are subject to change prior to or during construction  
© Copyright Patrick J. Morabito, AIA Architect. These drawings may not be reproduced in any form without written permission from Patrick J. Morabito, AIA Architect and Woodstone Custom Homes, Inc.*



**585-586-0953**