

# *Stonington Ridge*



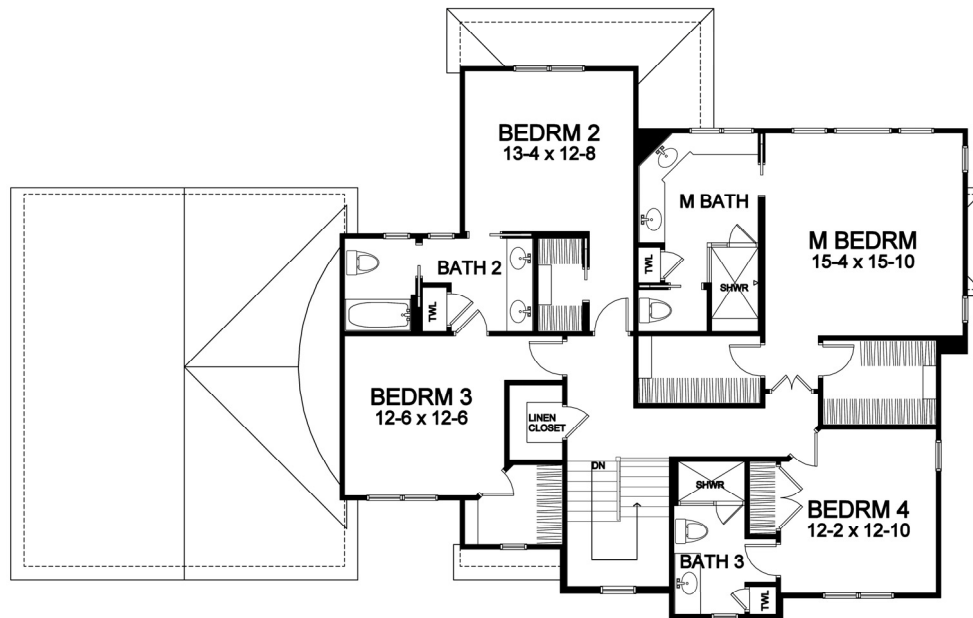
*Two Story Portfolio Plan — 3,023*

# STONINGTON RIDGE

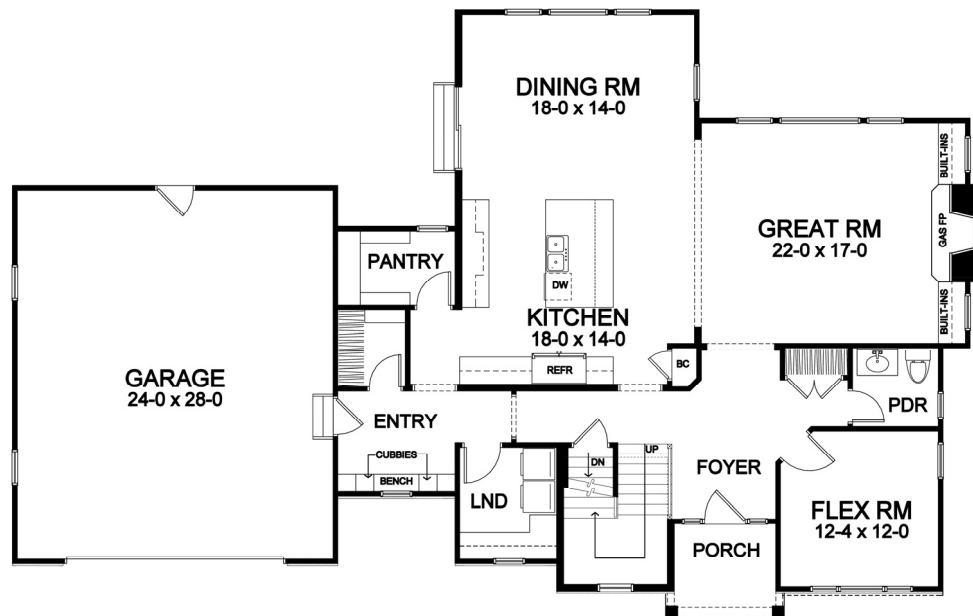
## Two Story Portfolio Plan - 3,023 Plan Details

- Square Footage:  
First Floor 1,572  
Second Floor 1,451  
Total 3,023
- Two Car Front-Load Garage
- Stone and Shake Accent Front
- Four Bedrooms; 3-1/2 Baths
- Great Room with Gas Fireplace, and Optional Built-ins
- Flex Room off Foyer
- Walk-in Pantry
- Second Floor Laundry
- Large Dining Room Open to Kitchen
- Hardwood Floors in Foyer, Kitchen, Dining Room, and Walk-in Pantry
- Master Suite with Oversized "His and Her" Closets, Toilet Room, Double Sinks and Make-Up Vanity
- Bench Seat in Entry with Walk-in Closet, and Optional Built-in Cubbies
- Ceramic Tile Floors in Entry, Baths, Powder Room, and Laundry Room
- 96%+ Efficient Heating/Cooling System for Superior Comfort and Efficiency

Second Floor



First Floor



Dimensions shown are approximate and not final. All dimensions are subject to change prior to or during construction  
© Copyright Patrick J. Morabito, AIA Architect. These drawings may not be reproduced in any form without written permission from Patrick J. Morabito, AIA Architect and Woodstone Custom Homes, Inc.



585-586-0953