

Stonington Ridge



Two Story Portfolio Plan — 2,246

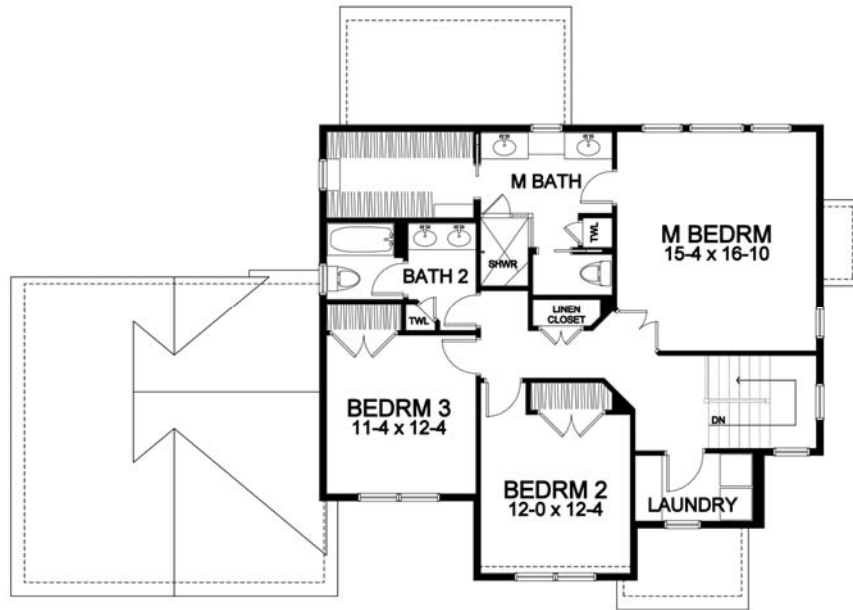
STONINGTON RIDGE

Two Story Portfolio Plan - 2,246 Plan Details

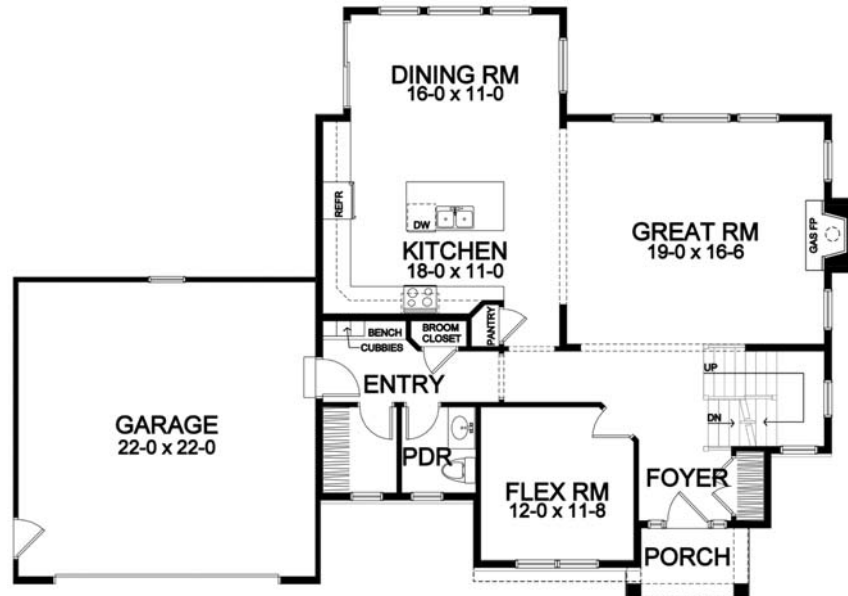
- Square Footage:

First Floor	1,208
Second Floor	1,038
Total	2,246
- Two Car Front-Load Garage
- Stone Accent Front
- Three Bedrooms; 2-1/2 Baths
- Great Room with Gas Fireplace
- Flex Room off Foyer
- Second Floor Laundry
- Dining Room Open to Kitchen
- Pantry
- Open Foyer
- Hardwood Floors in Foyer, Kitchen, Dining Room, and Pantry
- Master Suite with Large Closet, Toilet Room, and Double Vanity
- Bath #2 is Split, with Double Vanity
- Bench Seat in Entry with Walk-in Closet, and Optional Built-in Cubbies
- Ceramic Tile Floors in Entry, Baths, Powder and Laundry Room
- 95%+ Efficient Heating/Cooling System for Superior Comfort and Efficiency

Second Floor



First Floor



*Dimensions shown are approximate and not final. All dimensions are subject to change prior to or during construction
© Copyright Patrick J. Morabito, AIA Architect. These drawings may not be reproduced in any form without written permission from Patrick J. Morabito, AIA Architect and Woodstone Custom Homes, Inc.*



585-586-0953