

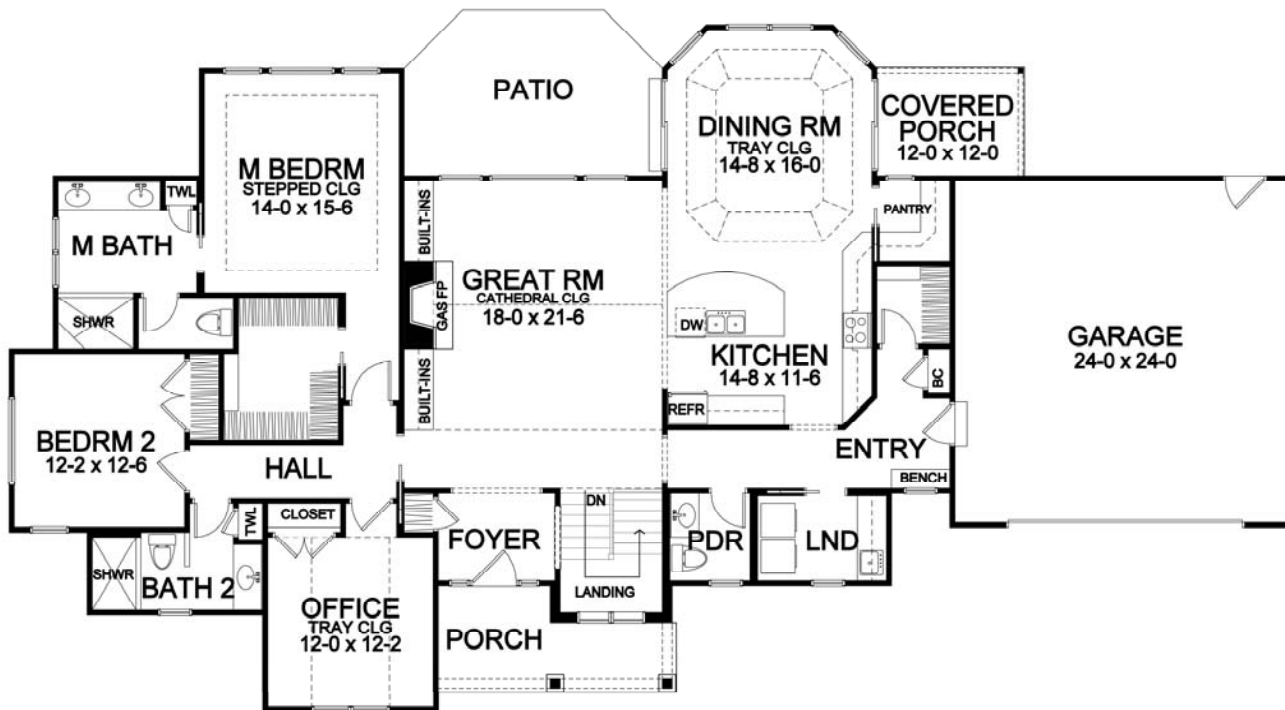
Stonington Ridge



Ranch Portfolio Plan — 2,126

STONINGTON RIDGE

Ranch Portfolio Plan - 2,126 Plan Details



First Floor

- Square Footage:
First Floor 2,126
Total 2,126
- Two Car Front-Load Garage
- Stone and Shake Siding Accent Front
- Three Bedrooms; 2-1/2 Baths
- Great Room with Gas Fireplace
- Office/Bedroom 3
- Laundry Room
- Dining Room Open to Kitchen/GR
- Covered Rear Porch, and Optional Patio
- Hardwood Floors in Foyer, Kitchen, Dining Room, and Walk-in Pantry
- Master Suite with Large Walk-in Closet, Toilet Room, and Double Vanity
- Built-In Bench Seat in Entry
- Ceramic Tile Floors in Entry, Baths, Powder Room and Laundry Room
- Optional High Ceilings in GR, Master Bedroom, Office, and Dining Room
- Central Staircase to Optional Finished Lower Level
- 95%+ Efficient Heating/Cooling System for Superior Comfort and Efficiency

*Dimensions shown are approximate and not final. All dimensions are subject to change prior to or during construction
© Copyright Patrick J. Morabito, AIA Architect. These drawings may not be reproduced in any form without written permission from Patrick J. Morabito, AIA Architect and Woodstone Custom Homes, Inc.*



585-586-0953