

# *Stonington Ridge*

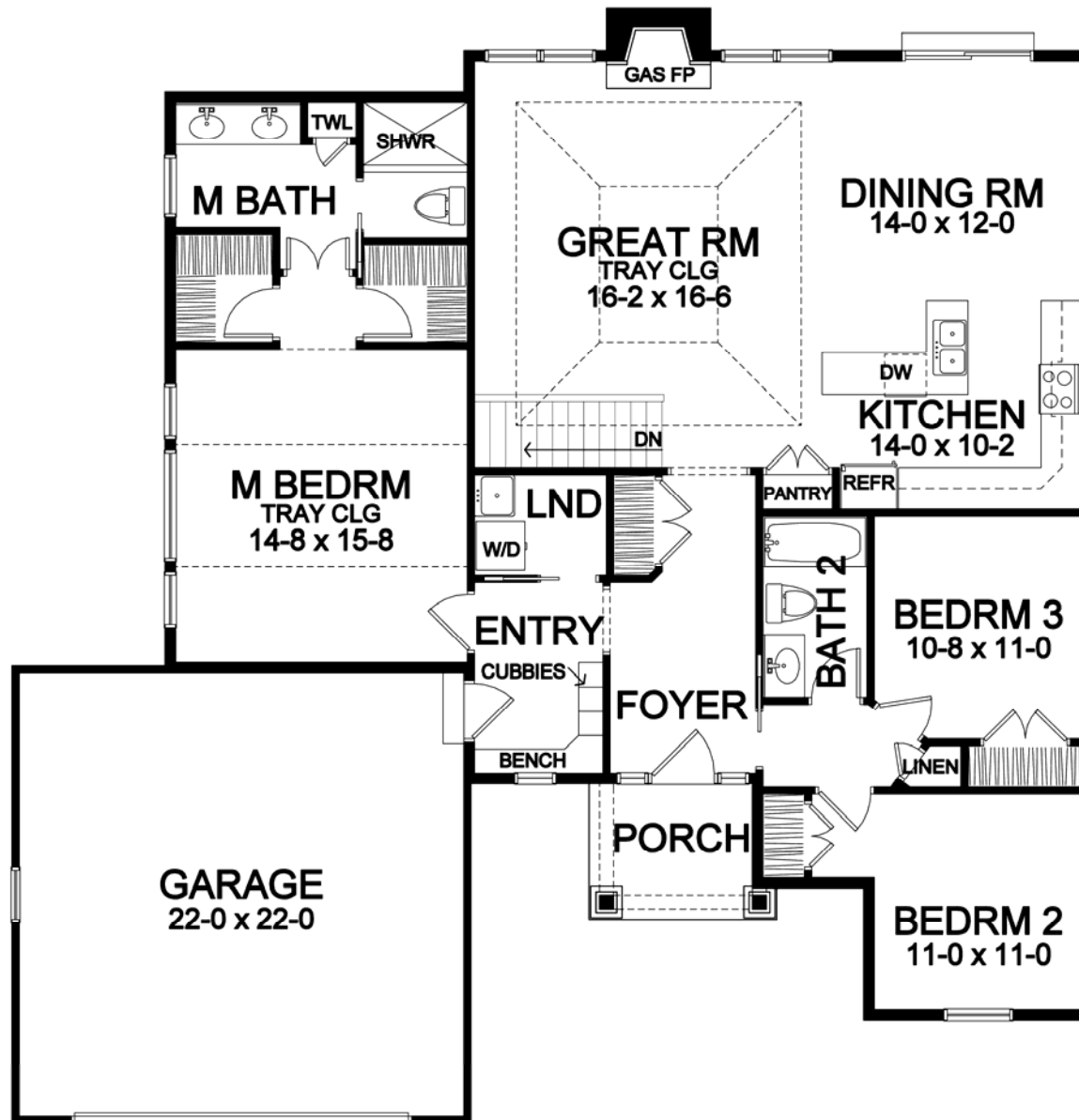


## *Ranch Portfolio Plan — 1,622*

# STONINGTON RIDGE

## Ranch Portfolio Plan - 1,622 Plan Details

- Square Footage:  
First Floor 1,622  
Total 1,622
- Two Car Front-Load Garage
- Stone and Shake Siding Accent Front
- Three Bedrooms; Two Baths
- Great Room with Gas Fireplace
- Laundry Room
- Dining Room Open to Kitchen/GR
- Pantry Closet
- Hardwood Floors in Foyer, Great Room, Kitchen, Dining Room, and Pantry
- Master Suite with Separate Walk-in Closets, Toilet Room, and Double Vanity
- Bench Seat in Entry, with Optional Built-in Cubbies
- Ceramic Tile Floors in Entry, Baths, and Laundry Room
- Optional Tray Ceilings in GR and Master Bedroom
- Central Staircase to Optional Finished Lower Level
- 95%+ Efficient Heating/Cooling System for Superior Comfort and Efficiency



First Floor

*Dimensions shown are approximate and not final. All dimensions are subject to change prior to or during construction  
© Copyright Patrick J. Morabito, AIA Architect. These drawings may not be reproduced in any form without written permission from Patrick J. Morabito, AIA Architect and Woodstone Custom Homes, Inc.*



585-586-0953