

# *Stonington Ridge*

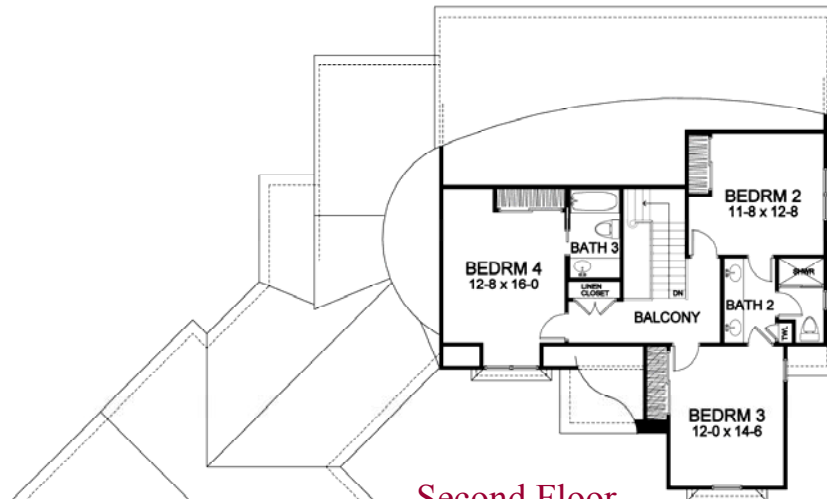


*First Floor Master Portfolio Plan — 2,930*

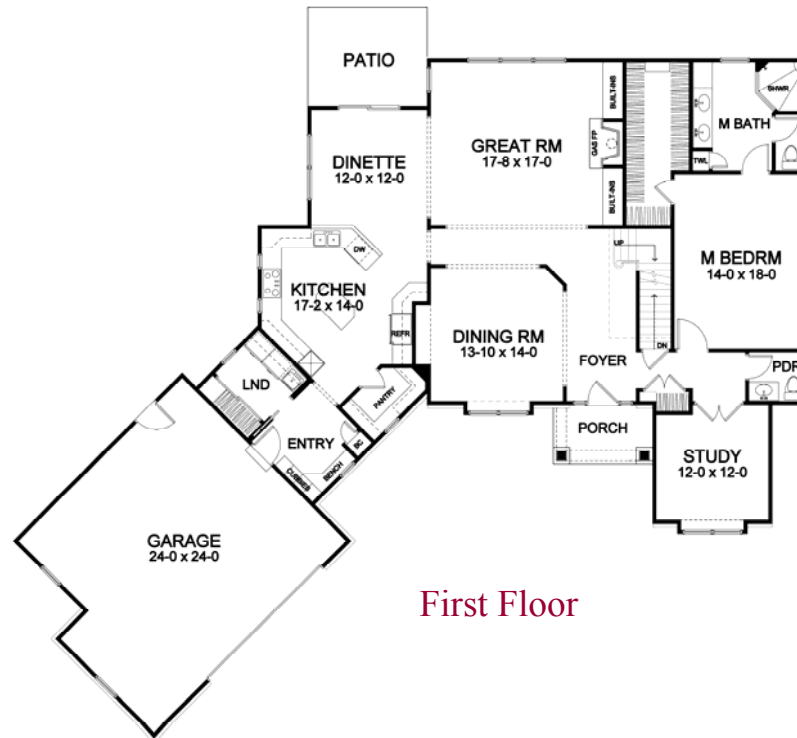
# STONINGTON RIDGE

## FF Master Portfolio Plan - 2,930 Plan Details

- Square Footage:
  - First Floor 2,100
  - Second Floor 830
  - Total 2,930
- Two Car Angle-Load Garage with Storage
- Stone Accent Front
- Four Bedrooms; 3-1/2 Baths
- Great Room with Gas Fireplace, and Optional Built-ins
- First Floor Laundry Room
- Study off Foyer
- Formal Dining Room
- Walk-in Pantry
- Hardwood Floors in Foyer, Kitchen, Dinette, and Pantry
- Master Suite with Large Walk-in Closet, Toilet Room, and Double Vanity
- Bench Seat in Entry, with Optional Built-in Cubbies
- Ceramic Tile Floors in Entry, Baths, Powder, and Laundry
- 95%+ Efficient Heating/Cooling System for Superior Comfort and Efficiency



Second Floor



First Floor

*Dimensions shown are approximate and not final. All dimensions are subject to change prior to or during construction  
© Copyright Patrick J. Morabito, AIA Architect. These drawings may not be reproduced in any form without written permission from Patrick J. Morabito, AIA Architect and Woodstone Custom Homes, Inc.*



585-586-0953