

# *Stonington Ridge*

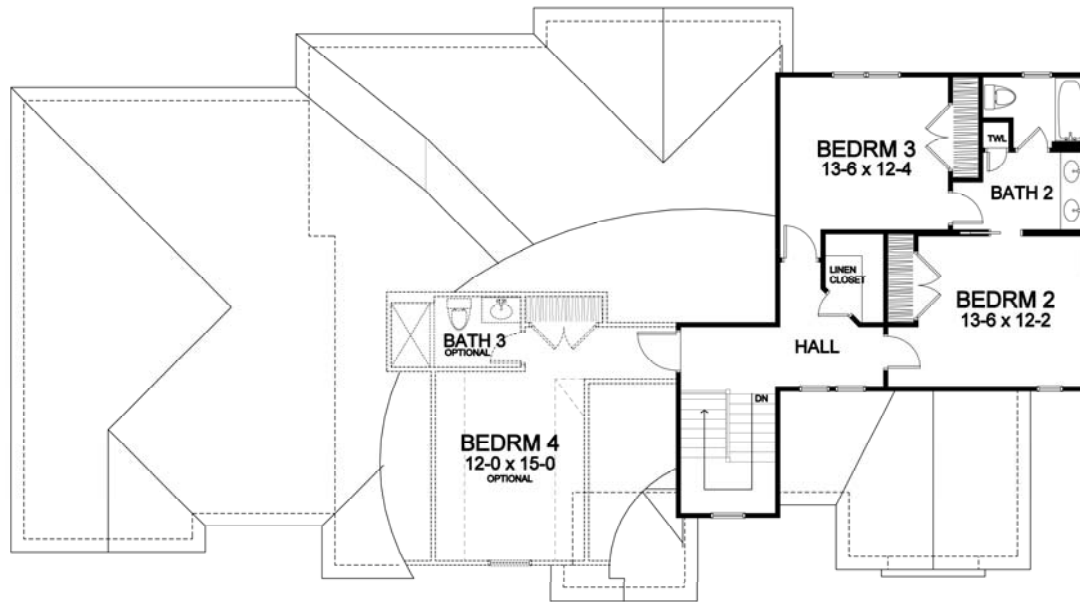


*First Floor Master Portfolio Plan — 2,809*

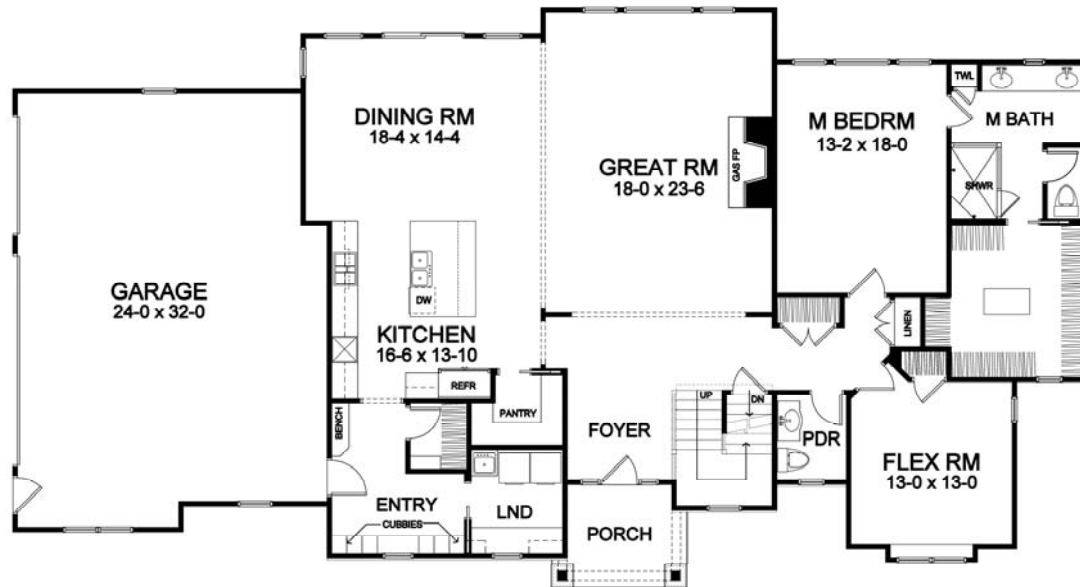
# STONINGTON RIDGE

## FF Master Portfolio Plan - 2,809 Plan Details

- Square Footage:
  - First Floor 2,168
  - Second Floor 641
  - Total 2,809
- Three Car Side-Load Garage
- Stone and Shake Accent Front
- Three Bedrooms; 2-1/2 Baths
- Great Room with Gas Fireplace
- First Floor Laundry Room
- Flex Room off Foyer
- Large Dining Room Open to Kitchen/GR
- Walk-in Pantry
- Hardwood Floors in Foyer, Kitchen, Dining Room, and Pantry
- Master Suite with Large Walk-in Closet, Toilet Room, and Double Vanity
- Bench Seat in Entry with Walk-in Closet, and Optional Built-in Cubbies
- Ceramic Tile Floors in Entry, Baths, Powder, and Laundry
- Optional 4th Bedroom and 3rd Bath
- 95%+ Efficient Heating/Cooling System for Superior Comfort and Efficiency



Second Floor



First Floor

*Dimensions shown are approximate and not final. All dimensions are subject to change prior to or during construction © Copyright Patrick J. Morabito, AIA Architect. These drawings may not be reproduced in any form without written permission from Patrick J. Morabito, AIA Architect and Woodstone Custom Homes, Inc.*



585-586-0953