

Stonington Ridge



Two Story Portfolio Plan — 3,058

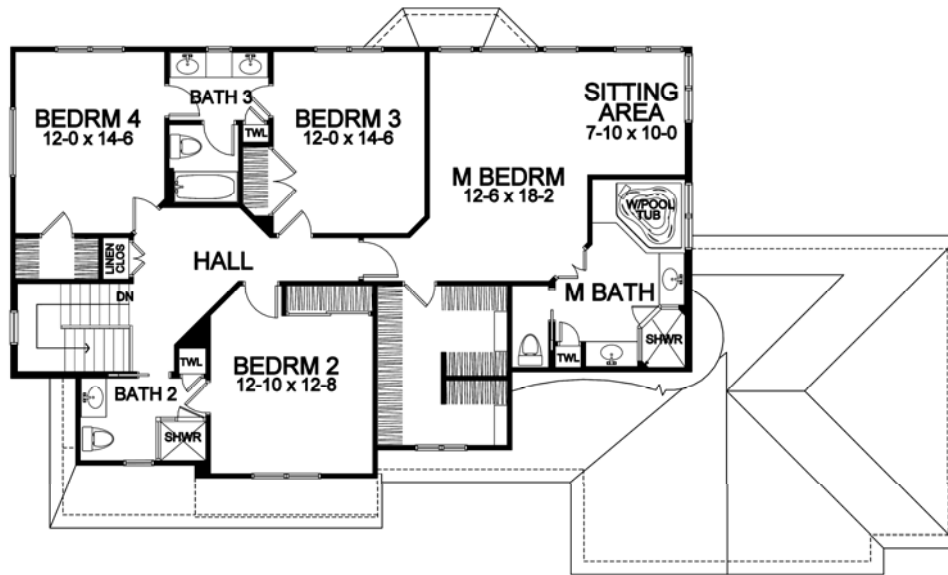
STONINGTON RIDGE

Two Story Portfolio Plan - 3,058 Plan Details

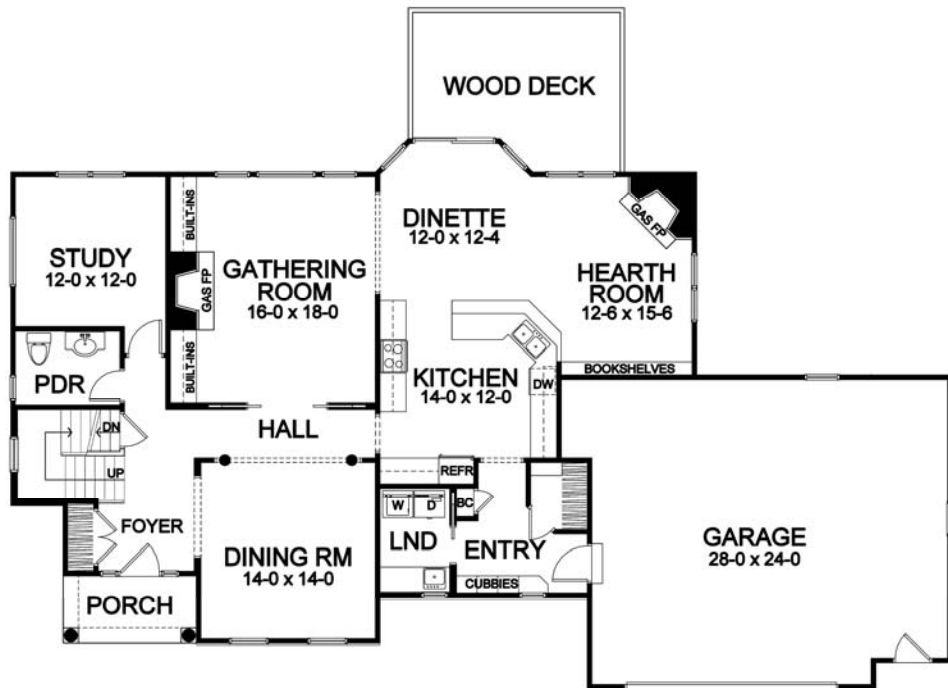
- Square Footage:

First Floor	1,581
Second Floor	1,477
Total	3,058
- Two Car Front-Load Garage with Storage
- Stone Accent Front
- Four Bedrooms; 3-1/2 Baths
- Gathering Room with Gas Fireplace
- Hearth Room with Gas Fireplace
- Optional GR and Hearth Room Built-ins
- Study off Foyer
- First Floor Laundry
- Formal Dining Room
- Hardwood Floors in Foyer, Kitchen, Dinette, and Hearth Room
- Master Suite with Large Closet, Whirlpool Tub, Toilet Room, and Separate Vanities
- Bench Seat in Entry with Walk-in Closet, and Optional Built-in Cubbies
- Ceramic Tile Floors in Entry, Baths, Powder and Laundry Room
- Optional Exterior Wood Deck
- 95%+ Efficient Heating/Cooling System for Superior Comfort and Efficiency

Second Floor



First Floor



*Dimensions shown are approximate and not final. All dimensions are subject to change prior to or during construction
© Copyright Patrick J. Morabito, AIA Architect. These drawings may not be reproduced in any form without written permission from Patrick J. Morabito, AIA Architect and Woodstone Custom Homes, Inc.*



585-586-0953