

Stonington Ridge



Two Story Portfolio Plan — 2,924

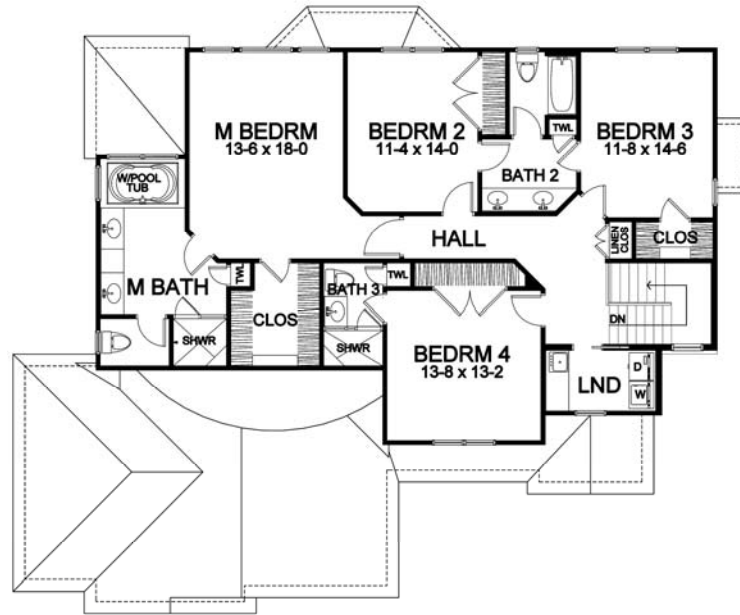
STONINGTON RIDGE

Two Story Portfolio Plan - 2,924 Plan Details

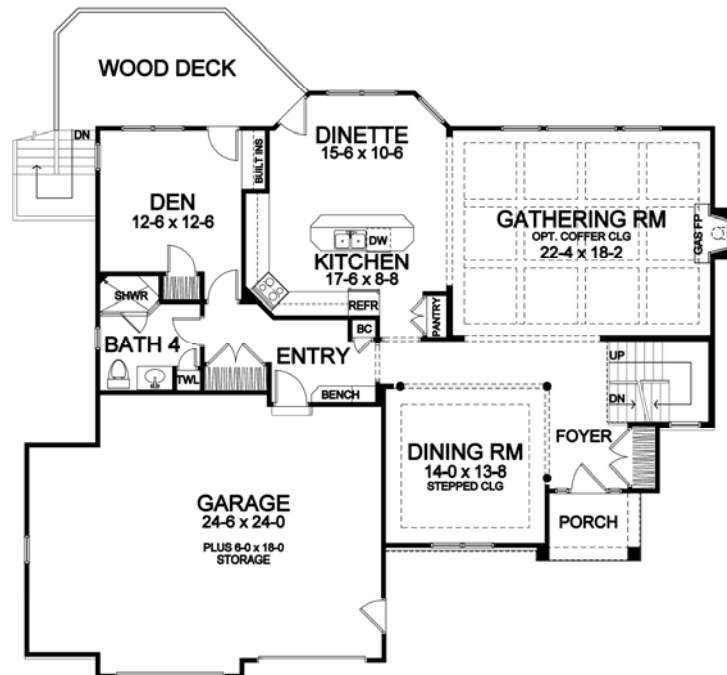
- Square Footage:

First Floor	1,518
Second Floor	1,406
Total	2,924
- Two Car Front-Load Garage with Storage
- Stone Accent Front
- Four Bedrooms; Four Baths
- Large Great Room with Gas Fireplace, and Optional Coffered Ceiling
- First Floor Den/Bedroom 5, with Optional Built-ins
- Second Floor Laundry
- Formal Dining Room, with Optional Stepped Ceiling
- Hardwood Floors in Foyer, Kitchen, Dinette, and Pantry
- Master Suite with Whirlpool Tub, Toilet Room, and Double Vanity
- Bench Seat in Entry
- Ceramic Tile Floors in Entry, Baths, and Laundry Room
- Optional Exterior Wood Deck and Stairs
- 95%+ Efficient Heating/Cooling System for Superior Comfort and Efficiency

Second Floor



First Floor



*Dimensions shown are approximate and not final. All dimensions are subject to change prior to or during construction
© Copyright Patrick J. Morabito, AIA Architect. These drawings may not be reproduced in any form without written permission from Patrick J. Morabito, AIA Architect and Woodstone Custom Homes, Inc.*



585-586-0953