

Stonington Ridge



Two Story Portfolio Plan — 2,687

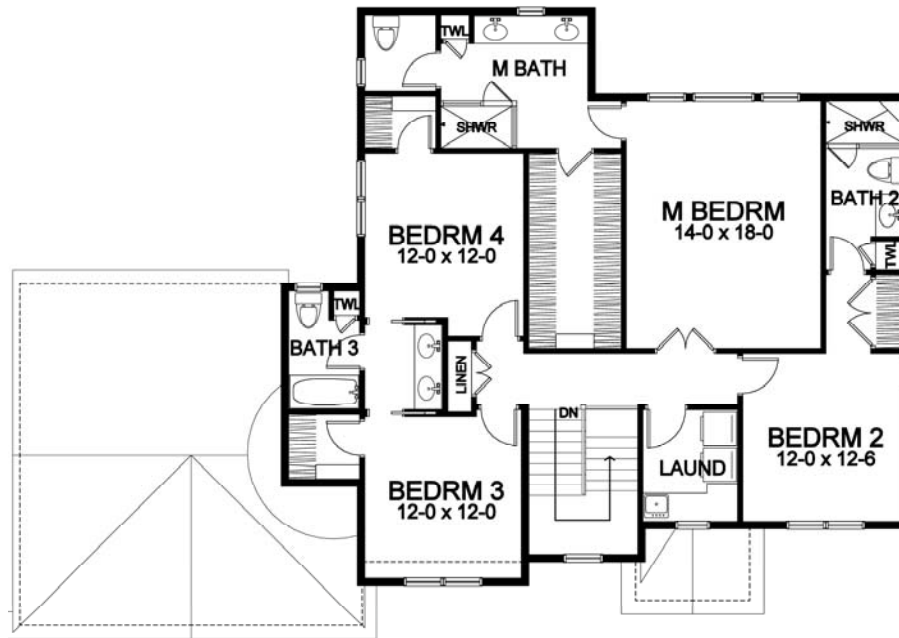
STONINGTON RIDGE

Two Story Portfolio Plan - 2,687 Plan Details

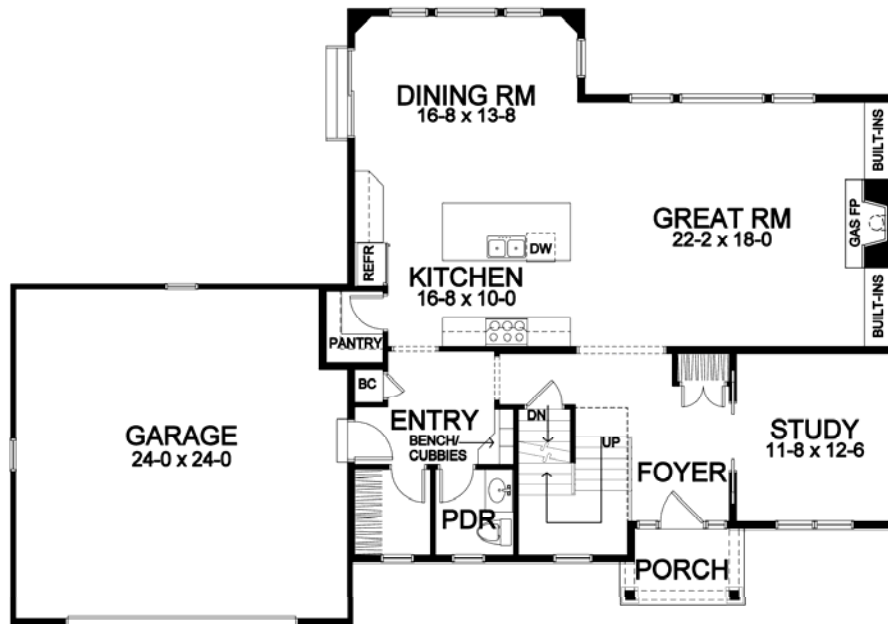
- Square Footage:

First Floor	1,343
Second Floor	1,344
Total	2,687
- Two Car Front-Load Garage
- Stone and Shake Siding Accent Front
- Four Bedrooms; 3-1/2 Baths
- Large Great Room with Gas Fireplace, and Optional Built-ins
- Study off Foyer
- Second Floor Laundry
- Dining Room Open to Kitchen
- Walk-in Pantry
- Hardwood Floors in Foyer, Great Room, Kitchen, Dining Room, and Pantry
- Master Suite with Large Closet, Toilet Room, and Double Vanity
- Bench Seat in Entry with Walk-in Closet, and Optional Built-in Cubbies
- Ceramic Tile Floors in Entry, Baths, Powder and Laundry Room
- 95%+ Efficient Heating/Cooling System for Superior Comfort and Efficiency

Second Floor



First Floor



*Dimensions shown are approximate and not final. All dimensions are subject to change prior to or during construction
© Copyright Patrick J. Morabito, AIA Architect. These drawings may not be reproduced in any form without written permission from Patrick J. Morabito, AIA Architect and Woodstone Custom Homes, Inc.*



585-586-0953