

Stonington Ridge



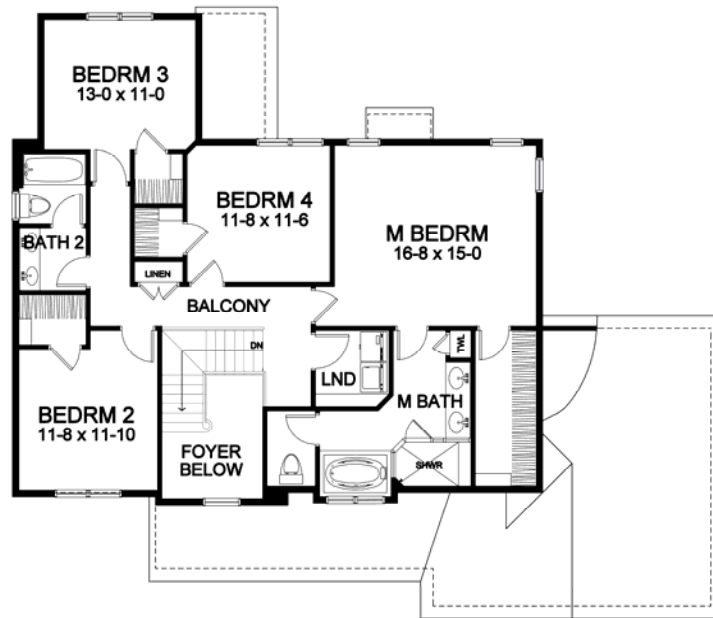
Two Story Portfolio Plan — 2,463

STONINGTON RIDGE

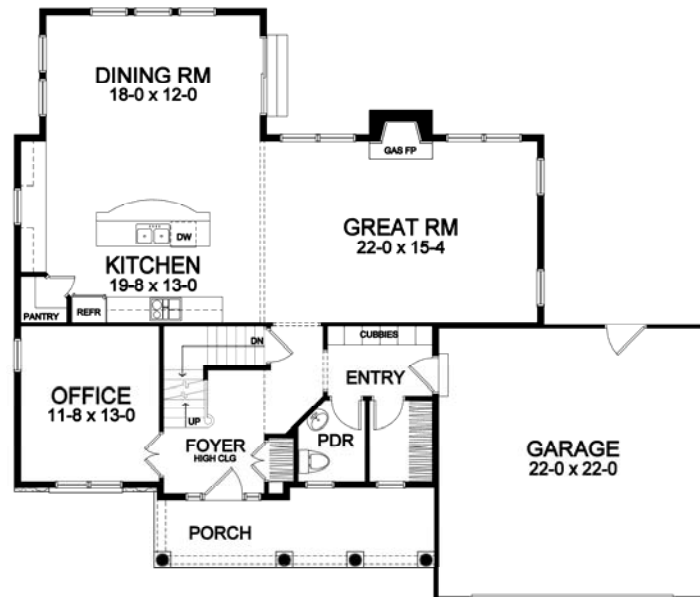
Two Story Portfolio Plan - 2,463 Plan Details

- Square Footage:

First Floor	1,261
Second Floor	1,202
Total	2,463
- Two Car Front-Load Garage
- Stone Accent Front
- Four Bedrooms; 2-1/2 Baths
- Great Room with Gas Fireplace
- Office off Foyer
- Second Floor Laundry
- Dining Room Open to Kitchen
- Walk-in Pantry
- Two Story Foyer
- Hardwood Floors in Foyer, Great Room, Kitchen, Dining Room, and Pantry
- Master Suite with Large Closet, Whirlpool Tub, Toilet Room, and Double Vanity
- All bedrooms with Walk-in Closets
- Bench Seat in Entry with Walk-in Closet, and Optional Built-in Cubbies
- Ceramic Tile Floors in Entry, Baths, Powder and Laundry Room
- 95%+ Efficient Heating/Cooling System for Superior Comfort and Efficiency



Second Floor



First Floor

*Dimensions shown are approximate and not final. All dimensions are subject to change prior to or during construction
© Copyright Patrick J. Morabito, AIA Architect. These drawings may not be reproduced in any form without written permission from Patrick J. Morabito, AIA Architect and Woodstone Custom Homes, Inc.*



585-586-0953